

# 2025 臺中榮民總醫院院慶國際醫學研討會

## TCVGH International Medical Conference

### AI in Medicine

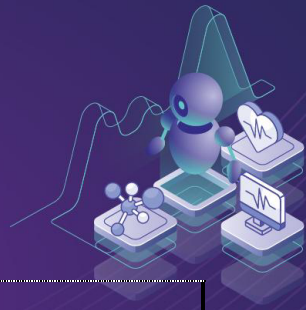
Future of Healthcare by AI



 <p>照片請附原始檔</p>	姓名	洪崇傑
	職稱	主任醫師
	科別／系所	中國醫藥大學附設醫院/精神醫學部成癮防治精神科
	機構／單位／學院	中國醫藥大學附設醫院/精神醫學部成癮防治精神科
	E-Mail	<a href="mailto:alouette_rouge@yahoo.com.tw">alouette_rouge@yahoo.com.tw</a>
Professional Career	<p>現職：</p> <ol style="list-style-type: none"> <li>1. 中國醫藥大學附設醫院 精神醫學部成癮防治精神科主任</li> <li>2. 中國醫藥大學附設醫院 藥酒癮防治中心主任</li> <li>3. 中國醫藥大學附設醫院 精神醫學部病房主任</li> <li>4. 亞洲大學職能治療學系 兼任助理教授</li> </ol> <p>經歷</p> <ol style="list-style-type: none"> <li>1. 中山醫學大學附設醫院 藥酒癮防治中心主任</li> <li>2. 中山醫學大學附設醫院 身心科主治醫師</li> <li>3. 中國醫藥大學附設醫院 精神醫學部住院醫師、總醫師、主治醫師</li> <li>4. 林口長庚醫院兒童醫院住院醫師暨一般科住院醫師</li> </ol> <p>學歷：</p> <ol style="list-style-type: none"> <li>1. 長庚大學醫學系醫學士</li> <li>2. 國立中興大學法律學系在職專班 法學碩士</li> <li>3. 國立中正大學法律學系研究所 博士候選人</li> <li>4. 中國醫藥大學 臨床醫學研究所 醫學碩士</li> <li>5. 中國醫藥大學 臨床醫學研究所 醫學博士</li> </ol> <p>專長：一般精神醫學；成癮醫學；藥酒癮治療；司法精神鑑定</p>	
Speech Title	<p><b>Assessment of Work Capacity in Patients with Mental Illness</b> (精神疾病的勞動力評估)</p>	

## AI in Medicine

Future of Healthcare by AI



Abstract( 200 words) :

According to American Medical Association Guides to the Evaluation of Permanent Impairment (AMA Guide), the client suffered from the disease caused in workplace or accident, they could apply for evaluation of impairment of working capacity. Concerning the psychiatric diseases, the AMA Guide suggested the confirmed diagnosis of psychiatric disease, serial psychometric scales and complete psychological rating tools.

The psychiatric diseases or psychological impairment is both difficult to be noticed but had caused serious diseases burden in the worldwide. It's also difficult to examine correctly the sufferance and working deficiency of the psychiatric diseases. The causal relationship between accident and the psychiatric diseases makes it difficult to form an adequate certification. With the amendment of new mental health act in Taiwan since 2022, the Legislative announced the core principle of anti-discrimination, self-determination and right to health of patient with psychiatric disease. In this speech, the procedure and SOP of how to examine and predict the deficiency of working capacity of psychiatric diseases after the accident (either in working place or public environment) will be introduced and reflected back to the current problems concerning about assessment of working capacity of patients with psychiatric diseases.