

2025 臺中榮民總醫院院慶國際醫學研討會 TCVGH International Medical Conference

AI in Medicine

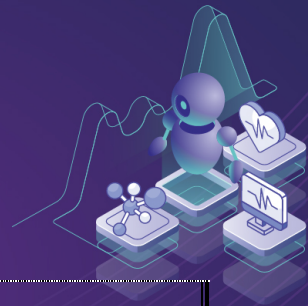
Future of Healthcare by AI



	姓名	陳家馨
	職稱	主治醫師
	科別／系所	影像醫學部
	機構／單位／學院	台中榮民總醫院
	E-Mail	eternalcelestial@gmail.com
Professional Career	<ul style="list-style-type: none">• Neuroradiologist, Taichung Veterans General Hospital (2022–present)• Visiting Scholar, University of North Carolina at Chapel Hill, Biomedical Research Imaging Center (BRIC), USA (June 2024–February 2025)• Interventional Neuroradiology Training, Taipei Veterans General Hospital (2022–2023)• Neuroradiology Fellowship, Taichung Veterans General Hospital (2021–2022)• Residency in Radiology, Taichung Veterans General Hospital (2017–2021)• Postgraduate Year Resident, Taipei Veterans General Hospital (2016–2017)• Doctor of Medicine, National Defense Medical Center, Taiwan (2009–2016)	
Speech Title	Pediatric inflammatory encephalopathy	

AI in Medicine

Future of Healthcare by AI



Abstract(200 words) :

Pediatric encephalopathy encompasses a broad spectrum of etiologies, with inflammatory and autoimmune causes representing a critical, often reversible subset. Early recognition is essential to initiate timely treatment and prevent long-term neurological sequelae. This presentation focuses on the imaging approach to pediatric inflammatory encephalopathy, with emphasis on practical differentiation from infectious and other mimicking conditions.

Through illustrative MRI-based case reviews and a proposed diagnostic algorithm, we will explore key imaging patterns associated with major inflammatory disorders, including acute disseminated encephalomyelitis (ADEM), acute necrotizing encephalopathy (ANE), and immune-mediated toxic encephalopathies.

Autoimmune syndromes such as anti-NMDA receptor encephalitis and other antibody-associated encephalitides will also be discussed in the context of their radiologic and clinical features.

While the focus remains on inflammatory and autoimmune causes, selected infectious etiologies—such as viral and enteroviral encephalitis—will be briefly addressed to underscore overlapping findings and critical distinguishing features.

By integrating imaging findings with clinical context and pathophysiological insights, this session aims to provide a structured, practical framework for radiologists and clinicians to narrow the differential diagnosis, guide further testing, and optimize care for children presenting with acute encephalopathy.